



Illumina DNA Prep

Reference Guide

ILLUMINA PROPRIETARY

Document # 10000000254 16 v10

August 2021

For Research Use Only. Not for use in diagnostic procedures.

This document and its contents are proprietary to Illumina, Inc. and its affiliates ("Illumina"), and are intended solely for the contractual use of its customer in connection with the use of the product(s) described herein and for no other purpose. This document and its contents shall not be used or distributed for any other purpose and/or otherwise communicated, disclosed, or reproduced in any way whatsoever without the prior written consent of Illumina. Illumina does not convey any license under its patent, trademark, copyright, or common-law rights nor similar rights of any third parties by this document.

The instructions in this document must be strictly and explicitly followed by qualified and properly trained personnel in order to ensure the proper and safe use of the product(s) described herein. All of the contents of this document must be fully read and understood prior to using such product(s).

FAILURE TO COMPLETELY READ AND EXPLICITLY FOLLOW ALL OF THE INSTRUCTIONS CONTAINED HEREIN MAY RESULT IN DAMAGE TO THE PRODUCT(S), INJURY TO PERSONS, INCLUDING TO USERS OR OTHERS, AND DAMAGE TO OTHER PROPERTY, AND WILL VOID ANY WARRANTY APPLICABLE TO THE PRODUCT(S).

ILLUMINA DOES NOT ASSUME ANY LIABILITY ARISING OUT OF THE IMPROPER USE OF THE PRODUCT(S) DESCRIBED HEREIN (INCLUDING PARTS THEREOF OR SOFTWARE).

© 2020 Illumina, Inc. All rights reserved.

All trademarks are the property of Illumina, Inc. or their respective owners. For specific trademark information, see www.illumina.com/company/legal.html.

Table of Contents

Overview	1
DNA Input Recommendations	1
DNA Input 100–500 ng	1
DNA Input < 100 ng	1
Assess DNA Purity	2
Blood and Saliva Input Recommendations	2
Sample Input Recommendations	3
PCR Amplicons	3
Additional Resources	3
Protocol	5
Library Prep Workflow	7
Tagment Genomic DNA	8
Post Tagmentation Cleanup	9
Amplify Tagmented DNA	11
Clean Up Libraries	13
Pool Libraries	15
Check Library Quality (Optional)	16
Dilute Libraries to the Starting Concentration	18
Appendix 2 Supplemental Procedures	20
[Optional] Blood Lysis	20
[Optional] Saliva Lysis	22

Appendix 2 Supporting Information	25
How the Illumina DNA Prep Assay Works	25
Kit Contents	27
Illumina DNA Prep Contents	29
Index Kit Contents	29
Flex Lysis Reagent Kit (Optional)	30
Symbol Descriptions	30
Consumables and Equipment	31
Consumables	32
Equipment	33
Acronyms	34
Revision History	35
Technical Assistance	39

Overview

This guide explains how to prepare up to 384 uniquely dual-indexed paired-end libraries from DNA using the Illumina DNA Prep workflow.

The Illumina DNA Prep workflow:

- Uses tagmentation, an enzymatic reaction, to fragment DNA and add adapter sequences in only 15 minutes.
- Uses innovative sample normalization at inputs ≥ 100 ng.
- Streamlines sample pooling and sequencing.
- Master mixed reagents reduce containers, pipetting, and hands-on time.
- Requires as little as 1 ng input.
- Can prepare libraries directly from whole blood or saliva samples when using an extraction protocol.
- Is compatible with extracted formalin-fixed paraffin-embedded (FFPE) samples. $\Delta Cq \leq 5$ is recommended for optimal performance.

DNA Input Recommendations

The Illumina DNA Prep protocol is compatible with DNA inputs of 1–500 ng or higher. For human DNA samples and other large complex genomes, the recommended minimum DNA input is 100–500 ng. For small genomes, such as microbial, the DNA input amount can be reduced to as low as 1 ng. If reducing the DNA input amount, modify the PCR cycling conditions accordingly.

Assess DNA purity to make sure that the initial DNA sample does not contain > 1 mM EDTA and is free of organic contaminants, such as phenol and ethanol. These substances can interfere with the tagmentation reaction and result in assay failure.

DNA Input 100–500 ng

For DNA inputs between 100–500 ng, quantifying and normalizing the initial DNA sample is not required.

DNA Input < 100 ng

This protocol does not normalize final library yields from < 100 ng DNA input. Therefore, quantification and normalization of libraries before sequencing is required.

If using < 100 ng DNA input, quantifying the initial DNA sample to determine the number of PCR cycles required is recommended. Use a fluorometric-based method to quantify double-stranded DNA input. Avoid methods that measure total nucleic acid, such as NanoDrop or other UV absorbance methods. For more information see [Sample Input Recommendations on page 3](#).

Assess DNA Purity

UV absorbance is a common method used for assessing the purity of a DNA sample. The ratio of absorbance at 260 nm to absorbance at 280 nm provides an indication of sample purity. This protocol is optimized for DNA with 260/280 absorbance ratio values of 1.8–2.0, which indicates a pure DNA sample.

For a secondary indication of sample purity, use the ratio of absorbance at 260 nm to absorbance at 230 nm. Target a 260/230 ratio of 2.0–2.2. Values outside this range indicate the presence of contaminants. For a complete list of contaminants, including sources, avoidance, and effects on the library preparation, see the *Nextera XT Troubleshooting Technical Note*.

Dilute the starting material in 10 mM Tris-HCl, pH 7.5–8.5. Incomplete tagmentation caused by contaminants can cause library preparation failure, poor clustering, or low quality sequencing results.

Blood and Saliva Input Recommendations

The Illumina DNA Prep protocol is compatible with fresh whole blood (requires the Flex Lysis Reagent Kit) and saliva sample inputs. For information about protocols specific to blood and saliva, see [\[Optional\] Blood Lysis on page 20](#) or [\[Optional\] Saliva Lysis on page 22](#).

When starting with 10 µl liquid whole blood in EDTA tubes or 30 µl saliva in Oragene tubes, expect normalization of libraries equal to that observed when using ≥ 100 ng DNA input. Blood and saliva are heterogeneous sample types, therefore the ability of Illumina DNA Prep to generate normalized libraries depends on the total amount of DNA obtained from the lysed sample. The following factors can adversely affect normalization of library independent of kit performance:

- Viscosity of the saliva samples
- Blood sample age
- Storage conditions
- Underlying medical conditions affecting white blood cell counts

Sample Input Recommendations

The Illumina DNA Prep workflow is compatible with blood and saliva samples when using the following protocols and reagent kits:

- Illumina Blood Lysis Protocol (blood) with Flex Lysis Reagent Kit
- Illumina Saliva Lysis Protocol (saliva)

The recommended number of PCR cycles for the BLT PCR program are adjusted based on sample input concentration and quality. For more information, see [Amplify Tagmented DNA on page 11](#).

Table 1 DNA Input Recommendations

Total DNA Input (ng)	Quantification of Input DNA Recommended	Normalized Library Yield
1–9		
10–24		
25–49	Yes	No
50–99		
100–500	No	Yes
Blood/Saliva	No	Yes

PCR Amplicons

When starting with PCR amplicons, the PCR amplicon must be > 150 bp. The standard clean-up protocol depletes libraries < 500 bp. Therefore, Illumina recommends that amplicons < 500 bp undergo a 1.8 x Illumina Purification Beads volume normal ratio to supernatant during [Clean Up Libraries](#). Shorter amplicons can otherwise be lost during the library cleanup step.

Tagmentation cannot add an adapter directly to the distal end of a fragment, so a drop in sequencing coverage of ~50 bp from each distal end is expected. To ensure sufficient coverage of the amplicon target region, design primers to extend beyond the target region by 50 bp per end.

Additional Resources

The [Illumina DNA Prep](#) support pages on the Illumina website provide software, training resources, product compatibility information, and the following documentation. Always check support pages for the latest versions.

- Compatible products and requirements for recording sample information, sequencing libraries, and analyzing data.
- Questions and answers about using the kit.
- Training videos about the kit and courses for related products and subjects.
- The latest versions of the kit documentation.

Table 2 Sample Input Recommendations

Resource	Description
Custom Protocol Selector	A tool for generating end-to-end instructions tailored to your library prep method, run parameters, and analysis method, with options to refine the level of detail.
<i>Illumina DNA Prep Checklist (document # 1000000033561)</i>	Provides a checklist of steps for the experienced users.
<i>Illumina DNA Prep Consumables and Equipment List (document # 1000000033564)</i>	Provides an interactive checklist of user-supplied consumables and equipment.
<i>Index Adapter Pooling Guide (document # 1000000041074)</i>	Provides pooling guidelines and dual-index strategies for using the 10 base pair IDT for Illumina DNA/RNA UD Indexes or 8 base pair Nextera XT and Nextera XT v2 Indexes with the Illumina DNA Prep kit.
<i>Illumina Adapter Sequences (document # 1000000002694)</i>	Provides the nucleotide sequences that comprise Illumina oligonucleotides used in Illumina sequencing technologies.
<i>Infinium HD FFPE QC Assay Protocol (document # 15020981)</i>	Provides the protocol to assess DNA input quality for FFPE samples.
<i>Illumina Free Adapter Blocking Reagent (document # 1000000047585)</i>	Provides the protocol to block excess free adapter, minimize index hopping, and enhance data quality.
IDT for Illumina DNA/RNA UD Indexes support page	Provides information about IDT for Illumina DNA/RNA Unique Dual (UD) indexes.

Protocol

This chapter describes the Illumina DNA Prep protocol.

- Review the planned complete sequencing workflow, from sample through analysis, to ensure compatibility of products and experiment parameters.
- Before proceeding, confirm kit contents and make sure that you have the required components, equipment, and consumables. This protocol requires library prep reagents and index adapters. Index adapters are sold separately. See [Supporting Information on page 25](#)
- Follow the protocols in the order shown, using the specified volumes and incubation parameters.

Prepare for Pooling

If you plan to pool libraries, record information about your samples before starting library prep using Illumina Experiment Manager (IEM), Local Run Manager, or BaseBase Sequence Hub. For information on the tools compatible with your sequencing system, visit the [Illumina DNA Prep Product Compatibility page](#).

- For low-plexity pooling strategies (2-plex to 9-plex), see the *Index Adapters Pooling Guide (document # 100000004 1074)*.
- For index adapter sequences and information about recording the sequences, see *Illumina Adapter Sequences (document # 100000004 1074)*.

Tips and Techniques

Unless a safe stopping point is specified in the protocol, proceed immediately to the next step.

Avoiding Cross-Contamination

- When adding or transferring samples or reagent master mixes, change tips between *each sample*.
- When adding index adapters with a multichannel pipette, change tips between *each row* or *each column*. If using a single channel pipette, change tips between each sample.
- [Tubes] Open only one index adapter tube at a time to prevent misplacing caps. Remove unused index adapter tubes from the working area.

Sealing the Plate

- Always seal the 96-well plate with the adhesive seal using a rubber roller to cover the plate before the following steps in the protocol:
 - Shaking steps
 - Thermal cycling steps
 - Centrifuge steps

- Microseal 'B' adhesive seals are effective at -40°C to 110°C and suitable for skirted or semiskirted PCR plates. Use Microseal 'B' seals for thermal cycling or short-term storage.
- Microseal 'F' foil seals are effective at temperatures down to -70°C and are suitable for storing the 96-well plates containing the final libraries long term.

Handling Bead-Linked Transposomes (BLT)

- Store the BLT stock tube upright in the refrigerator so that the beads are always submerged in the buffer.
- Vortex the BLT stock tube thoroughly until the beads are resuspended. To avoid resettling the beads, centrifugation before pipetting is not recommended.
- If beads are adhered to the side or top of a 96-well plate, centrifuge at 280 × g for 3 seconds, and then pipette to resuspend.
- When washing beads:
 - Use the appropriate magnetic stand for the plate.
 - Keep the plate on the magnetic stand until the instructions specify to remove it.
 - Do not agitate the plate while it is on the magnetic stand.
 - Do not disturb the bead pellet.
 - If beads are aspirated into pipette tips, dispense back into the plate on the magnetic stand and wait until the liquid is clear (~2 minutes).
 - Dispense Tagment Wash Buffer (TWB) directly onto the beads.
 - If liquid becomes adhered to the side or top of the tube or well, centrifuge at 280 × g for 3 seconds to pull volume into liquid.

Prepare index plates as follows.

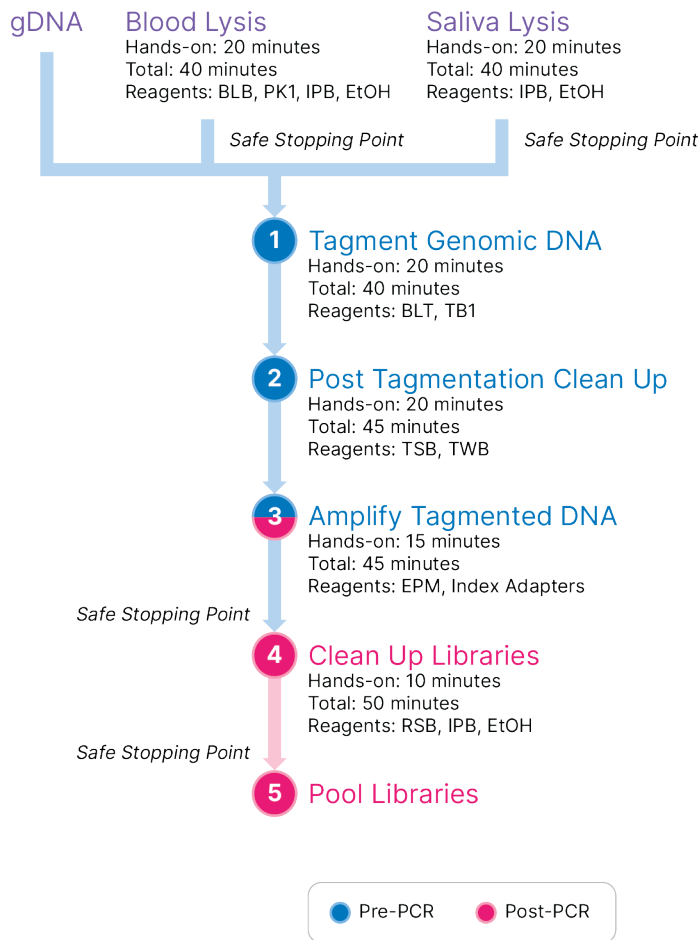
- Illumina DNA Prep is compatible with IDT[®] for Illumina[®] DNA/RNA Unique Dual (UD), IDT for Illumina Nextera DNA Unique Dual (UD), and Nextera DNA Combinatorial Dual (CD) Indexes.
- Pipette slowly to minimize foaming.
- Each index plate is for single use only.
- IDT[®] for Illumina[®] DNA/RNA UD Indexes use 10 base pair index codes that differ from Nextera DNA CD indexes, which use eight base pair index codes. Confirm that your sequencing system is configured for 10 base pair index codes.
- Centrifuge at 1000 × g for 1 minute to settle liquid away from the seal.
- [**< 96 samples**] Pierce the foil seal on the index adapter plate using a new pipette tip for each well for only the number of samples being processed.
- [**96 samples**] Align a new Eppendorf 96-well PCR plate above the index adapter plate and press down to puncture the foil seal on all 96 wells. Press down slowly to avoid tipping the volume over.
- Discard the empty Eppendorf plate used to puncture the foil seal.

Library Prep Workflow

The following diagram illustrates the Illumina DNA Prep workflow. Safe stopping points are marked between steps.

Time estimates are based on preparing 16 samples using a multichannel pipette.

Figure 1 Illumina DNA Prep Workflow




Time estimates based on preparing 16 samples using a multichannel pipette.

Tagment Genomic DNA

This step uses the Bead-Linked Transposomes (BLT) to tagment DNA, which is a process that fragments and tags the DNA with adapter sequences.

Consumables

- Bead-Linked Transposomes (BLT)
- Tagment Buffer 1 (TB1)
- Nuclease-free water
- 96-well PCR plate
- 1.7 ml microcentrifuge tubes
- 8-tube strip
- Microseal 'B' adhesive seal
- Pipette tips
 - 20 µl multichannel pipettes
 - 200 µl multichannel pipettes

 This set of reagents contains potentially hazardous chemicals. Personal injury can occur through inhalation, ingestion, skin contact, and eye contact. Wear protective equipment, including eye protection, gloves, and laboratory coat appropriate for risk of exposure. Handle used reagents as chemical waste and discard in accordance with applicable regional, national, and local laws and regulations. For additional environmental, health, and safety information, see the SDS at support.illumina.com/sds.html.

About Reagents

- BLT must be stored at temperatures above 2°C. Do not use eBLT that has been stored below 2°C.

Preparation

1. Prepare the following consumables:

Item	Storage	Instructions
BLT	2°C to 8° C	Bring to room temperature. Vortex to mix. Do not centrifuge before pipetting.
TB1	-25°C to -15°C	Bring to room temperature. Vortex to mix.

2. Save the following TAG program on the thermal cycler:

- Choose the preheat lid option and set to 100°C
- Set the reaction volume to 50 µl
- 55°C for 15 minutes
- Hold at 10°C

Procedure

1. Add 2–30 µl DNA to each well of a 96-well PCR plate so that the total input amount is 100–500 ng.
2. If DNA volume < 30 µl, add nuclease-free water to the DNA samples to bring the total volume to 30 µl.
3. Vortex BLT (yellow cap) vigorously for 10 seconds to resuspend. Repeat as necessary.
4. Combine the following volumes to prepare the Tagmentation Master Mix. Multiply each volume by the number of samples being processed.
 - BLT(11 µl)
 - TB1 (11 µl)

These volumes produce 22 µl Tagmentation Master Mix per sample, which includes extra volume for accurate pipetting.

5. Vortex the Tagmentation Master Mix thoroughly to resuspend.
6. Divide the Tagmentation Master Mix volume equally into an 8-tube strip.
7. Using a 200 µl multichannel pipette, transfer 20 µl Tagmentation Master Mix from the 8-tube strip to each well of the plate containing a sample.
Use fresh tips for each sample column.
8. Discard the 8-tube strip after the Tagmentation Master Mix has been dispensed.
9. Pipette each sample 10 times to resuspend.
10. Place on the preprogrammed thermal cycler and run the TAG program.

Post Tagmentation Cleanup

This step washes the adapter-tagged DNA on the BLT before PCR amplification.

Consumables

- Tagment Stop Buffer (TSB)
- Tagment Wash Buffer (TWB)
- 96-well plate magnet
- Microseal 'B' adhesive seal
- Pipette tips

- 20 µl multichannel pipettes
- 200 µl multichannel pipettes

Preparation

1. Prepare the following consumables:

Item	Storage	Instructions
TSB	Room temperature	If precipitates are observed, heat at 37°C for 10 minutes, and then vortex until precipitates are dissolved.
TWB	Room temperature	Use at room temperature.

2. Save the following PTC program on the thermal cycler:
 - Choose the preheat lid option and set to 100°C
 - Set the reaction volume to 60 µl
 - 37°C for 15 minutes
 - Hold at 10°C

Procedure

1. Add 10 µl TSB to the plate.
2. Slowly pipette each well 10 times to resuspend the beads, and then seal.
3. Place on the preprogrammed thermal cycler and run the PTC program.
4. Place the plate on the magnetic stand and wait until liquid is clear (~3 minutes).
5. Using a multichannel pipette, remove and discard supernatant.
6. Wash two times as follows:
 - a. Remove the sample plate from the magnetic stand and use a deliberately slow pipetting technique to add 100 µl TWB directly onto the beads. A deliberately slow pipetting technique minimizes the potential of TWB foaming to avoid incorrect volume aspiration and incomplete mixing.
 - b. Pipette slowly until beads are fully resuspended.
 - c. Place the plate on the magnetic stand and wait until the liquid is clear (~3 minutes).
 - d. Using a multichannel pipette, remove and discard supernatant.
7. Remove the plate from the magnetic stand and use a deliberately slow pipetting technique to add 100 µl TWB directly onto the beads.
8. Pipette each well slowly to resuspend the beads.
9. Seal the plate and place on the magnetic stand until the liquid is clear (~3 minutes). Keep on the magnetic stand until step 4 of the *Procedure* section in *Amplify Tagmented DNA*.

The TWB remains in the wells to prevent overdrying of the beads.

Amplify Tagmented DNA

This step amplifies the tagmented DNA using a limited-cycle PCR program. The PCR step adds Index 1 (i7) adapters, Index 2 (i5) adapters, and sequences required for sequencing cluster generation. To confirm the indexes selected for low plexity pooling have the appropriate color balance, see the *Index Adapters Pooling Guide (document # 100000004 1074)*.

For a list of compatible index adapters for use with this protocol, see [Index Kit Contents on page 29](#)

Consumables

- Enhanced PCR Mix (EPM)
- Index adapters (tubes or plate)
- Nuclease-free water
- 1.7 ml microcentrifuge tubes
- Microseal 'B' adhesive seal
- Pipette tips
 - 20 µl multichannel pipettes
 - 200 µl multichannel pipettes

About Reagents

- Index adapter plates
 - A well may contain > 10 µl of index adapters.
 - Do not add samples to the index adapter plate.
 - Each well of the index plate is single use only.
- Index adapter tubes
 - Open only one index adapter tube at a time to prevent misplacing caps. Alternatively, use fresh caps after opening each tube.

Preparation

1. Prepare the following consumables:

Item	Storage	Instructions
EPM	-25°C to -15°C	Thaw on ice. Invert to mix, then briefly centrifuge.

Item	Storage	Instructions
Index Adapters	-25°C to -15°C	Thaw at room temperature. [Tubes] Vortex to mix, then centrifuge briefly. [Plates] Spin briefly before use.

2. Save the following BLT PCR program on a thermal cycler using the appropriate number of PCR cycles, indicated in the table below.

- Choose the preheat lid option and set to 100°C
- 68°C for 3 minutes
- 98°C for 3 minutes
- (X) cycles of:
 - 98°C for 45 seconds
 - 62°C for 30 seconds
 - 68°C for 2 minutes
- 68°C for 1 minutes
- Hold at 10°C

Total DNA Input (ng)	Number of PCR Cycles (X)
1–9	12
10–24	8
25–49	6
50–99	5
100–500	5
Blood/Saliva	5

Procedure

1. Combine the following volumes to prepare the PCR Master Mix. Multiply each volume by the number of samples being processed.

- EPM (22 µl)
- Nuclease-free water (22 µl)

Reagent overage is included in the volume to ensure accurate pipetting.

2. Vortex, and then centrifuge the PCR Master Mix at 280 × g for 10 seconds.

3. With the plate on the magnetic stand, use a 200 µl multichannel pipette to remove and discard supernatant.

Foam that remains on the well walls does not adversely affect the library.

4. Remove from the magnet.
5. Immediately add 40 μ l PCR Master Mix directly onto the beads in each sample well.
6. Immediately pipette to mix until the beads are fully resuspended. Alternatively, seal the plate and use a plate shaker at 1600 rpm for 1 minute.
7. Seal the sample plate and centrifuge at 280 \times g for 3 seconds.
8. Add the appropriate index adapters to each sample.

Index Kit Type	Kit Configuration	Volume of Index Adapter per Sample
24 plex (dual index)	Individual tubes	5 μ l i7 adapter 5 μ l i5 adapter
96 plex (dual index)	96-well plate	10 μ l pre-paired i7 and i5 index adapters

9. Using a pipette set to 40 μ l, pipette 10 times to mix. Alternatively, seal the plate and use a plate shaker at 1600 rpm for 1 minute.
10. Seal the plate with Microseal 'B', and then centrifuge at 280 \times g for 30 seconds.
11. Place on the preprogrammed thermal cycler and run the BLT PCR program.

SAFE STOPPING POINT

If you are stopping, store at 2°C to 8°C for up to 30 days.

Clean Up Libraries

This step uses double-sided bead purification procedure to purify the amplified libraries.

Consumables

- Illumina Purification Beads (IPB)
- Resuspension Buffer (RSB)
- Freshly prepared 80% ethanol (EtOH)
- Nuclease-free water
- 96-well 0.8 ml Polypropylene Deepwell Storage Plate (MIDI plate) (2)
- 96-well PCR plate
- 1.7 ml microcentrifuge tubes
- Microseal 'B' adhesive seal
- Microseal 'F' foil seal

About Reagents

- Illumina Purification Beads
 - Must be at room temperature before use
 - Vortex before each use
 - Vortex frequently to make sure the beads are evenly distributed
 - Aspirate and dispense slowly due to the viscosity of the solution

Preparation

1. Prepare the following consumables:

Item	Storage	Instructions
IPB	Room temperature	Bring to room temperature. Vortex and invert to mix.
RSB	-25°C to -15°C	Thaw and bring to room temperature. Vortex to mix.

2. Prepare fresh 80% EtOH from absolute ethanol.

Procedure

1. Centrifuge at 280 × g for 1 minute to collect contents at the bottom of the well.
2. Place the plate on the magnetic stand and wait until the liquid is clear (~5 minutes).
3. Transfer 45 µl supernatant from each well of the PCR plate to the corresponding well of a new MIDI plate.
4. Vortex and invert IPB multiple times to resuspend.
5. For standard DNA input, do as follows.
 - a. Add 40 µl nuclease-free water to each well containing supernatant.
 - b. Add 45 µl IPB to each well containing supernatant.
 - c. Pipette each well 10 times to mix. Alternatively, seal the plate and use a plate shaker at 1600 rpm for 1 minute.
 - d. Seal the plate and incubate at room temperature for 5 minutes.
 - e. Place on the magnetic stand and wait until the liquid is clear (~5 minutes).
 - f. During incubation, thoroughly vortex the IPB (undiluted stock tube), and then add 15 µl to each well of a *new* MIDI plate.
 - g. Transfer 125 µl supernatant from each well of the first plate into the corresponding well of the new MIDI plate containing 15 µl undiluted IPB.
 - h. Pipette each well in the MIDI plate 10 times to mix. Alternatively, seal the plate and use a plate shaker at 1600 rpm for 1 minute.
 - i. Discard the first plate.

6. For small PCR amplicon input, perform the following steps.
 - a. Add 81 μ l IPB to each well of the MIDI plate containing supernatant.
 - b. Pipette each well 10 times to mix. Alternatively, seal the plate and use a plate shaker at 1600 rpm for 1 minute.
7. Incubate the sealed MIDI plate at room temperature for 5 minutes.
8. Place on the magnetic stand and wait until the liquid is clear (~5 minutes).
9. Without disturbing the beads, remove and discard supernatant.
10. Wash two times as follows.
 - a. With the plate on the magnetic stand, add 200 μ l fresh 80% EtOH without mixing.
 - b. Incubate for 30 seconds.
 - c. Without disturbing the beads, remove and discard supernatant.
11. Use a 20 μ l pipette to remove and discard residual EtOH.
12. Air-dry on the magnetic stand for 5 minutes.
13. Remove from the magnetic stand.
14. Add 32 μ l RSB to the beads.
15. Pipette to resuspend.
16. Incubate at room temperature for 2 minutes.
17. Place the plate on the magnetic stand and wait until the liquid is clear (~2 minutes).
18. Transfer 30 μ l supernatant to a new 96-well PCR plate.

SAFE STOPPING POINT

If you are stopping, seal the plate with Microseal 'B' adhesive or Microseal 'F' foil seal, and store at -25°C to -15°C for up to 30 days.

Pool Libraries

When the DNA input is 100-500 ng, quantifying and normalizing individual libraries generated in the same experiment is not necessary. However, the final yield of libraries generated in separate experiments can vary slightly.

To achieve optimal cluster density, pool equal library volumes and quantify the pool before sequencing.

DNA Inputs of 100–500 ng

1. Combine 5 μ l of each library (up to 384 libraries) in a 1.7 ml microcentrifuge tube.
2. Vortex to mix, and then centrifuge.
3. Quantify the library pool using a dsDNA fluorescent dye method, such as Qubit or PicoGreen.

For DNA Inputs of < 100 ng

1. Quantify each library individually using Qubit or PicoGreen.

Check Library Quality (Optional)

1. Assess quality of 1 μ l library or pooled libraries using one of the following methods.
 - Add 1 μ l RSB to the library or pooled libraries, and then analyze the 2 μ l volume using the Advanced Analytical Fragment Analyzer with the HS-NGS High Sensitivity 474 kit.
 - Analyze 1 μ l library or pooled libraries using the Agilent 2100 Bioanalyzer with a High Sensitivity DNA kit.

The following figures show typical library size profiles with an average fragment size of 600 bp when analyzed with a size range of 150–1500 bp.

Figure 2 Example Fragment Analyzer Trace

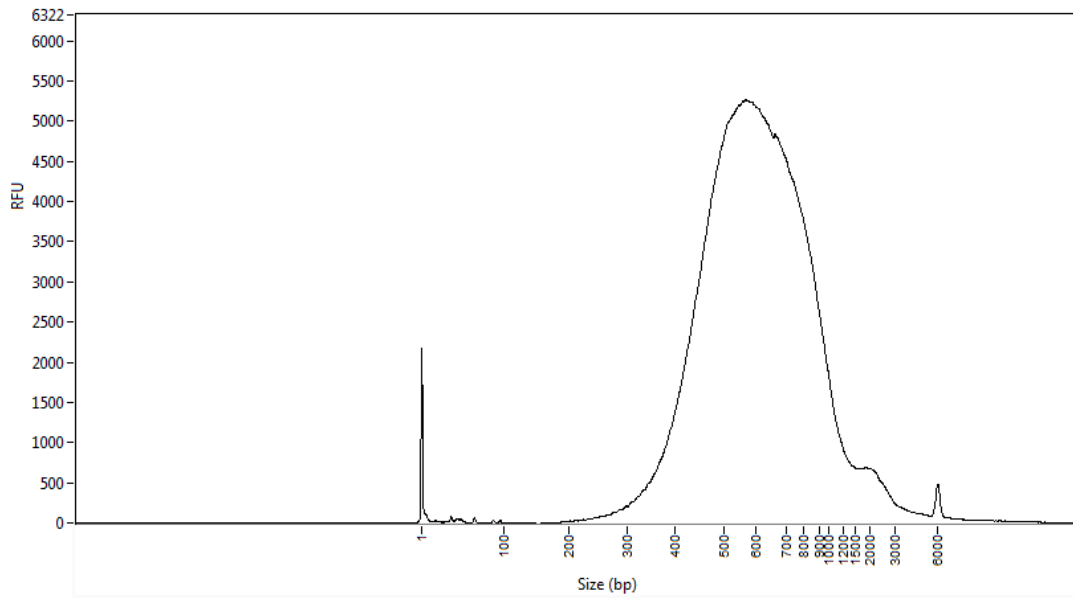
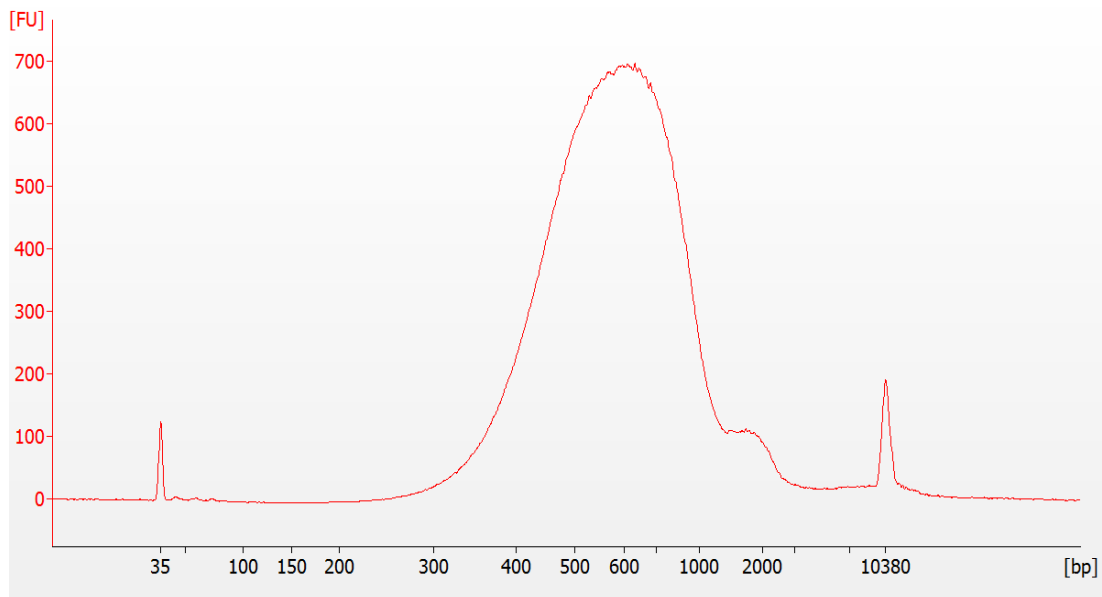


Figure 3 Example Bioanalyzer Trace



Dilute Libraries to the Starting Concentration

This step dilutes libraries to the starting concentration for your sequencing system and is the first step in a serial dilution. After diluting to the starting concentration, libraries are ready to be denatured and diluted to the final loading concentration.

For sequencing, Illumina recommends the read lengths indicated on the Illumina DNA Prep Product Compatibility support site page.

IDT for Illumina DNA/RNA UD Indexes uses 10 base pair index codes that differ from the Nextera DNA CD Indexes, which use eight base pair index codes. This change in base pair index codes can require adjustments to your sequencing run set up.

- Calculate the molarity value of the library or pooled libraries using the following formula.
 - For libraries qualified on a Bioanalyzer, use the average size obtained for the library.
 - For all other qualification methods, use 600 bp as the average library size.

$$\text{Molarity} = \frac{\left(\frac{\text{ng}}{\text{bp}}\right)}{660 \frac{\text{g}}{\text{mol}} \times 600 \text{ bp}}$$

- Using the molarity value, calculate the volumes of RSB and library needed to dilute libraries to the starting concentration for your system.

Sequencing System	Starting Concentration (nM)	Final Loading Concentration (pM)
HiSeq 2500 and HiSeq 2000 (high output modes)	2	12
HiSeq 2500 (rapid run mode)	2	8.5
HiSeq X, HiSeq 4000, and HiSeq 3000	2–3	200–300
iSeq 100	2	200
MiniSeq	2	1.2–1.3
MiSeq (v3 reagents)	4	12
NextSeq 550 and NextSeq 500	2	1.2–1.3
NextSeq 2000	2	750
NovaSeq 6000	2	See document # 1000000019358 (NovaSeq 6000 System Guide)

3. Dilute libraries using RSB:
 - Libraries quantified as a multiplexed library pool—Dilute the pool to the starting concentration for your system.
 - Libraries quantified individually—Dilute each library to the starting concentration for your system. Add 10 µl of each diluted library to a tube to create a multiplexed library pool.
4. Follow the denature and dilute instructions for your system to dilute to the final loading concentration.
 - For the iSeq 100 System, see the system guide for dilution instructions (libraries are automatically denatured).
 - For the NovaSeq 6000 System, see the system guide for pool and denature instructions.
 - For the HiSeq 4000 and HiSeq 3000 Systems, see the cBot 2 or cBot system guide for reagent preparation instructions.
 - For all other systems, see the denature and dilute libraries guide.

The final loading concentrations are a starting point and general guideline. Optimize concentrations for your workflow and quantification method over subsequent sequencing runs or by flow cell titration.


Supplemental Procedures

This section provides instructions for optional procedures within the Illumina DNA Prep workflow.

[Optional] Blood Lysis

Use this protocol when performing the Illumina DNA Prep workflow using blood sample inputs with the Flex Lysis Reagent Kit. This protocol has been validated using fresh whole blood collected in EDTA collection tubes. Store the blood at 4°C and process it within 3 days. The use of frozen blood has not been validated and cannot be recommended.

This protocol is expected to generate > 100 ng of DNA output at the end of the blood lysis step.

 Blood is a potential source of infectious diseases. Follow site-specific procedures to ensure the safe handling of blood samples. During the lysis protocol, make sure that the entire blood sample is fully lysed (brown in color following the heat incubation step) before proceeding to subsequent steps.

Consumables

- Illumina Purification Beads (IPB)
- EDTA collection tubes (for blood sample collection)
- Blood Lysis Buffer (BLB)
- Proteinase K (PK1)
- Freshly prepared 80% ethanol (EtOH)
- Nuclease-free water
- 96-well PCR plate

About Reagents

- Illumina Purification Beads
 - Must be at room temperature before use
 - Vortex before each use
 - Vortex frequently to make sure the beads are evenly distributed
 - Aspirate and dispense slowly due to the viscosity of the solution

Preparation

1. Prepare the following consumables.

Item	Storage	Instructions
BLB	Room temperature	If frozen, thaw at room temperature. If precipitates are observed, heat at 37°C for 10 minutes and vortex until resuspended.
PK1	-25°C to -15°C	Place on ice until needed.
IPB	Room temperature*	Bring to room temperature. Vortex and invert to mix.

*IPB is included in the Illumina DNA Prep Kit.

2. Prepare fresh 80% EtOH from absolute ethanol.
3. Save the following BLP program on the thermal cycler:
 - Choose the preheat lid option and set to 100°C
 - 56°C for 10 minutes

Procedure

1. Combine the following volumes to prepare the Lysis Master Mix. Multiply each volume by the number of samples being processed.
 - BLB (7 µl)
 - PK1 (2 µl)
 - Nuclease-free water (31 µl)
 Reagent overage is included in the volume to ensure accurate pipetting.
2. Vortex and centrifuge the Lysis Master Mix.
3. Invert the EDTA tube 10 times to mix.
4. Transfer 10 µl blood from the tube to one well of a 96-well PCR plate.
5. Add 40 µl Lysis Master Mix to each sample.
6. Vortex and invert IPB multiple times to resuspend.
7. Add 20 µl IPB to the well.
8. Using a pipette set to 50 µl, slowly pipette 10 times to mix, and then seal.
9. Place on the preprogrammed thermal cycler and run the BLP program.
10. Place on a magnetic stand and wait 5 minutes.

The liquid will not become clear due to the dark brown color of the blood from the lysis reaction. The beads migrate after 5 minutes.
11. Without disturbing the beads, remove and discard supernatant.
12. If beads are aspirated into pipette tips, dispense back to the plate on the magnetic stand, and wait until the liquid is clear (~2 minutes).

13. Add 150 μ l fresh 80% EtOH to the well.
14. Incubate on the magnetic stand for 30 seconds.
15. Pipette to remove and discard the EtOH.
16. Use a 20 μ l pipette to remove and discard all residual EtOH.
17. Remove the plate from the magnetic stand.
18. Add 30 μ l nuclease-free water and pipette to resuspend.
19. Proceed immediately to step 3 of [Tagment Genomic DNA on page 8](#) or stop and store the sample bead mixture.


SAFE STOPPING POINT

If you are stopping before proceeding to [Tagment Genomic DNA on page 8](#), seal the plate with a Microseal 'B' adhesive seal and store the sample bead mixture at 2°C to 8°C for up to 3 days.

[Optional] Saliva Lysis

Use this protocol when performing the Illumina DNA Prep workflow using saliva sample inputs. This protocol is validated for saliva collected only in Oragene DNA Saliva collection tubes. The saliva is mixed with the Oragene DX Solution contained in the collection tube, making it stable at room temperature.

This protocol is expected to generate > 100 ng of DNA output at the end of the saliva lysis step.

-  Saliva is a potential source of infectious diseases. Follow site-specific procedures to ensure the safe handling of saliva samples.

Consumables

- Illumina Purification Beads (IPB)
- Oragene DNA collection tubes (for saliva sample collection)
- Freshly prepared 80% ethanol (EtOH)
- Nuclease-free water
- 96-well PCR plate

About Reagents

- Illumina Purification Beads
 - Must be at room temperature before use
 - Vortex before each use
 - Vortex frequently to make sure the beads are evenly distributed

- Aspirate and dispense slowly due to the viscosity of the solution

Preparation

1. Prepare the following consumables.

Item	Storage	Instructions
Saliva samples in Oragene DNA collection tubes	Room temperature	For information on sample preparation and storage, see the DNA Genotek website.
IPB	Room temperature	Bring to room temperature. Vortex and invert to mix.

2. Prepare fresh 80% EtOH from absolute ethanol.

Procedure

1. For each sample, add 20 μ l nuclease-free water to one well of a 96-well PCR plate.
2. Vortex the heat-treated Oragene DNA collection tube.
3. Transfer 30 μ l saliva sample from the tube to the well containing water. Slowly pipette to mix. For viscous samples, use a wide-bore pipette tip for more accurate pipetting.
4. Vortex and invert IPB multiple times to resuspend.
5. Add 20 μ l IPB to the well.
6. Using a pipette set to 50 μ l, slowly pipette 10 times to mix.
7. Incubate at room temperature for 5 minutes.
8. Place on a magnetic stand and wait 5 minutes.
9. Without disturbing the beads, remove and discard supernatant.
10. If beads are aspirated into pipette tips, dispense back to the plate on the magnetic stand, and wait until the liquid is clear (~2 minutes).
11. Add 150 μ l fresh 80% EtOH to the well.
12. Incubate on the magnetic stand for 30 seconds.
13. Use a 20 μ l pipette to remove and discard all residual EtOH.
14. Remove the plate from the magnetic stand.
15. Add 30 μ l nuclease-free water and pipette to resuspend.
16. Proceed immediately to step 3 of [Tagment Genomic DNA on page 8](#) or stop and store the sample bead mixture.

SAFE STOPPING POINT

If you are stopping before proceeding to [Tagment Genomic DNA on page 8](#), seal the plate with a Microseal 'B' adhesive seal and store the sample bead mixture at 2°C to 8°C for up to 3 days.

Supporting Information

The protocol described in this guide assumes that you have reviewed the contents of this section, confirmed protocol contents, and obtained all required consumables and equipment.

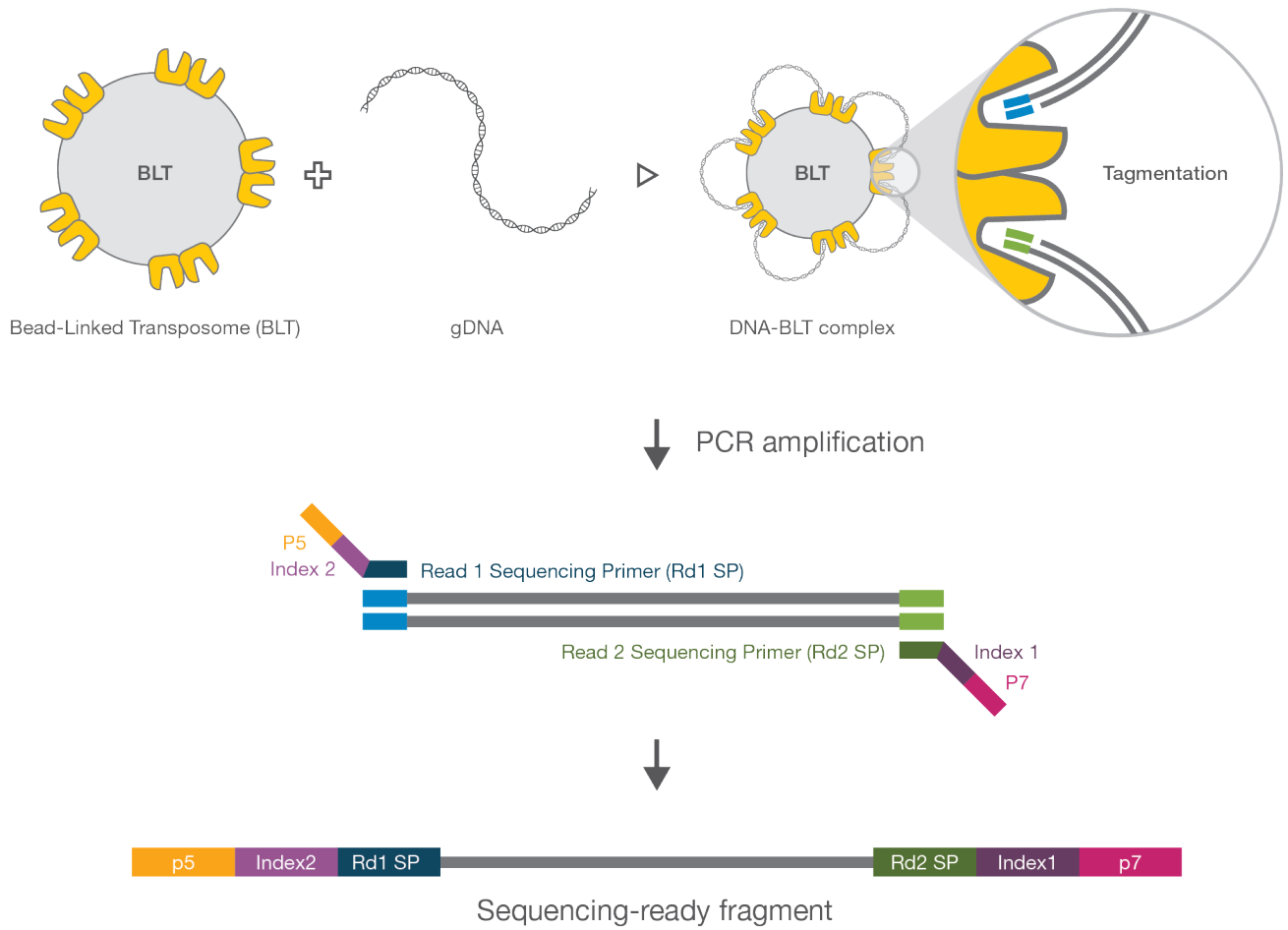
Introduction

The protocol described in this guide assumes that you have reviewed the contents of this section, confirmed protocol contents, and obtained all required consumables and equipment.

How the Illumina DNA Prep Assay Works

The Illumina DNA Prep library prep kit uses a bead-based transposome complex to tagment genomic DNA, which is a process that fragments DNA and then tags the DNA with adapter sequences in one step. After it is saturated with input DNA, the bead-based transposome complex fragments a set number of DNA molecules. This fragmentation provides flexibility to use a wide DNA input range to generate normalized libraries of consistent tight fragment size distribution. Following tagmentation, a limited-cycle PCR adds adapter sequences to the ends of a DNA fragment. This step enables upi to use the assay across all Illumina sequencing systems. A subsequent Illumina Purification Beads (IPB) cleanup step then purifies libraries for use on an Illumina sequencing system. The double-stranded DNA library is denatured before hybridization of the biotin probe oligonucleotide pool.

Figure 4 Illumina DNA Prep Workflow



Kit Contents

Completing the Illumina DNA Prep protocol requires library prep reagents and index adapters. The number of index adapters required depends on the number of samples to be uniquely indexed for your experiment. Depending on the sample input type and sequencing requirements, the protocol might require additional, optional consumables.

Component	Kit Options	Catalog #
Library prep reagents	Illumina DNA Prep (24 Samples)	20060060
	Illumina DNA Prep (96 Samples)	20060059
Index adapters ¹	IDT for Illumina Nextera DNA UD Indexes Set A (96 Indexes, 96 Samples)	20027213
	IDT for Illumina Nextera DNA UD Indexes- Set B (96 Indexes, 96 Samples)	20027214
	IDT for Illumina Nextera DNA UD Indexes- Set C (96 Indexes, 96 Samples)	20027215
	IDT for Illumina Nextera DNA UD Indexes- Set D (96 Indexes, 96 Samples)	20027216
	IDT for Illumina Nextera DNA UD Indexes- Set A,B,C,D (384 Indexes, 384 Samples)	20027217
	Nextera DNA CD Indexes (24 Indexes, 24 Samples)	20018707
	Nextera DNA CD Indexes (96 Indexes, 96 Samples)	20018708
	[Optional] Blood Lysis ²	Flex Lysis Reagent Kit (96 samples)
[Optional] Additional Reagents	Illumina Adapter Blocking Reagents (12 reactions)	20024 144
	Illumina Adapter Blocking Reagents (48 reactions)	20024 145
[Optional] Additional Accessories for Nextera DNA CD Indexes (24 Samples)	Bag of 48 Index Adapter replacement caps, orange	15026585
	Bag of 32 Index Adapter replacement caps, white	15026586

¹ Index kits are not interchangeable with Nextera XT index kits.

² Required when starting the protocol from fresh whole blood samples.

Illumina DNA Prep Contents

Illumina DNA Prep—Beads and Buffers, Store at room temperature

These reagents are shipped at 2°C to 8°C. Promptly store reagents at the indicated tube temperature to ensure proper performance.

Tube Quantity		Acronym	Reagent Name	Storage Temperature
24 Samples	96 Samples			
1	1	IPB	Illumina Purification Beads	Room temperature
1	4	TSB	Tagment Stop Buffer	Room temperature
1	1	TWB	Tagment Wash Buffer	Room temperature

Illumina DNA Prep—PCR and Buffers, Store at -25°C to -15°C

Tube Quantity		Acronym	Reagent Name
24 Samples	96 Samples		
1	1	RSB	Resuspension Buffer
1	4	TB1	Tagmentation Buffer 1
1	4	EPM	Enhancement PCR Mix

Illumina DNA Prep—Tagmentation (M) Beads, Store at 2°C to 8°C

Tube Quantity		Acronym	Reagent Name
24 Samples	96 Samples		
1	4	BLT	Bead-Linked Transposomes

Index Kit Contents

For index adapter sequences, see *Illumina Adapter Sequences (document # 1000000002694)*.

Nextera DNA CD Indexes (24 Indexes, 24 Samples) Tubes, Store at -25°C to -15°C

Quantity	Index Name	Description
1	H503	DNA Adapter
1	H505	DNA Adapter
1	H506	DNA Adapter
1	H517	DNA Adapter
1	H710	DNA Adapter
1	H705	DNA Adapter
1	H706	DNA Adapter
1	H707	DNA Adapter
1	H711	DNA Adapter
1	H714	DNA Adapter

IDT for Illumina DNA/RNA UD Indexes, IDT for Illumina Nextera DNA UD Indexes, or Nextera DNA CD Indexes (96 Indexes, 96 Samples) Plates, Store at -25°C to -15°C

Quantity	Description
1	96 Dual Adapter Index Plate

Flex Lysis Reagent Kit (Optional)

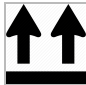

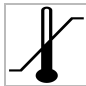







These reagents are shipped at -25°C to -15°C. Promptly store reagents at the indicated tube temperature to ensure proper performance.

Quantity	Acronym	Description	Storage Temperature
4	BLB	Blood Lysis Buffer	Room temperature
4	PK1	Proteinase K	-25°C to -15°C

Illumina Purification Beads are included in the Illumina DNA Prep 24 sample and 96 sample kits.

Symbol Descriptions

The following table describes the symbols on the shipment packaging, consumable, or consumable packaging.

Symbol	Description
	Indicates the direction to the top of the box.
	Indicates that the contents are fragile and must be handled with care.
	Storage temperature range in degrees Celsius. Store the consumable within the indicated range. ¹
	The date the consumable expires. For best results, use the consumable before this date.
	Indicates the manufacturer (Illumina).
	The intended use is Research Use Only (RUO).
	Indicates the part number so that the consumable can be identified. ²
	Indicates the batch code to identify the manufacturing batch or lot of the consumable. ¹
	Indicates that caution is necessary.
	Indicates a health hazard.

¹ Storage temperature can differ from shipping temperature.

² REF identifies the individual component, while LOT identifies the lot or batch the component belongs to.

Consumables and Equipment

Make sure that you have the required consumables and equipment before starting the protocol.

The protocol has been optimized and validated using the items listed. Comparable performance is not guaranteed when using alternate consumables and equipment.

Consumables

Consumable	Supplier
10 µl pipette tips	General lab supplier
10 µl multichannel pipettes	General lab supplier
10 µl single channel pipettes	General lab supplier
20 µl pipette tips	General lab supplier
20 µl multichannel pipettes	General lab supplier
20 µl single channel pipettes	General lab supplier
200 µl pipette tips	General lab supplier
200 µl multichannel pipettes	General lab supplier
200 µl single channel pipettes	General lab supplier
1000 µl pipette tips	General lab supplier
1000 µl single channel pipettes	General lab supplier
96-well 0.8 ml Polypropylene Deepwell Storage (MIDI plate)	ThermoFisher Scientific, catalog # AB-0859
Hard-Shell 96-well PCR plates	Bio-Rad, catalog # HSP-9601
1.7 ml microcentrifuge tubes	General lab supplier
Microseal 'B' adhesive seals	Bio-Rad, catalog # MSB-1001
Microseal 'F' foil seals	Bio-Rad, catalog # MSF-1001
RNase/DNase-free multichannel reagent reservoirs, disposable	VWR, catalog # 89094-658
Ethanol 200 proof (absolute) for molecular biology (500 ml)	Sigma-Aldrich, product # E7023
Nuclease-free water	General lab supplier
Qubit dsDNA HS Assay Kit	One of the following, depending on quantification method: <ul style="list-style-type: none"> • ThermoFisher Scientific, catalog # Q32851 • ThermoFisher Scientific, catalog # Q32854
Quant-iT™PicoGreen® dsDNA Assay Kit	ThermoFisher Scientific, catalog # P11496
Qubit Assay Tubes	ThermoFisher Scientific, catalog # Q32856

Consumable	Supplier
One of the following kits, depending on quantification method: <ul style="list-style-type: none"> • [Fragment Analyzer] High Sensitivity NGS Fragment Analysis Kit • [Bioanalyzer] Agilent High Sensitivity DNA Kit 	One of the following suppliers, depending on instrument: <ul style="list-style-type: none"> • Advanced Analytical, catalog # DNF-474 • Agilent, catalog # 5067-4626

Consumables for Blood and Saliva Input

Consumable	Supplier
[Blood] Flex Lysis Reagent Kit	Illumina, catalog # 20015884
[Blood] EDTA Blood Collection tubes	Becton Dickinson
[Saliva] Oragene DNA Collection Kit for Saliva	Genotek, catalog # OGR-500 or OGD-510

Equipment

Equipment	Supplier
Magnetic Stand-96	ThermoFisher Scientific, catalog # AM10027
Microplate centrifuge	General lab supplier
Microcentrifuge	General lab supplier
Vortexer	General lab supplier
Qubit® Fluorometer 3.0	ThermoFisher Scientific, catalog # Q33216, Q33217 or Q33218
One of the following analyzers: Advanced Analytical: <ul style="list-style-type: none"> • Fragment Analyzer™ Agilent Technologies: <ul style="list-style-type: none"> • 2100 Bioanalyzer Desktop System 	Advanced Analytical: <ul style="list-style-type: none"> • See web product pages for catalog numbers Agilent Technologies: <ul style="list-style-type: none"> • Part # G2940CA
[Saliva] Water bath or air incubator reaching 50°C	As recommended by DNA Genotek, see product pages.

Thermal Cyclers

The following table lists the recommended settings for the thermal cycler. If your lab has a thermal cycler that is not listed, validate the thermal cycler before performing the protocol.

Thermal Cycler	Temp Mode	Lid Temp	Vessel Type
Bio-Rad C-1000 Touch thermal cycler	Calculated	Heated	Plate
Bio-Rad DNA Engine Tetrad 2	Calculated	Heated	Polypropylene plates and tubes
MJ Research DNA Engine Tetrad	Calculated	Heated	Plate
Eppendorf Mastercycler Pro S	Gradient S, Simulated Tube	Heated	Plate

Acronyms

Acronym	Definition
BLT-PF	Bead Linked Transposome PCR-Free
dsDNA	Double stranded DNA
ELM	Extension Ligation Mix
EtOH	Ethanol
FLP	Final Library Plate
HP3	2 N NaOH
IPB	Illumina Purification Beads
LP1	Library Plate 1
LP2	Library Plate 2
MLB	Modified Lysis Buffer
PK1	Proteinase K
RSB	Resuspension Buffer
ssDNA	Single stranded DNA
ST2	Stop Tagment Buffer 2
TB1	Tagmentation Buffer 1
TWB	Tagment Wash Buffer
UD	Unique Dual

Revision History

Document	Date	Description of Change
10000000254 16 v10	August 2021	<ul style="list-style-type: none"> • Changed Sample Purification Beads (SPB) to Illumina Purification Beads (IPB). • Updated the Library prep reagents part numbers for Illumina DNA Prep (24 Samples) and Illumina DNA Prep (96 Samples). • Added the equation to calculate molarity.
10000000254 16 v09	June 2020	<ul style="list-style-type: none"> • Added dilution information for the NextSeq 2000 Sequencing System. • Added information for IDT for Illumina Nextera Indexes.
10000000254 16 v08	May 2020	<ul style="list-style-type: none"> • Changed product name from Nextera DNA Flex to Illumina DNA Prep. • Renamed index and reagent kits. • Updated catalog numbers for UD Index kits sets C and D. • Removed obsolete UD Indexes sets A-D kit option. • Updated the Additional Resources to remove document # 1000000070581, which applies only to the Illumina DNA Prep with Enrichment protocol.

Document	Date	Description of Change
10000000254 16 v07	May 2019	<ul style="list-style-type: none">• Added information on the IDT for Illumina Nextera Indexes Sets B, C, and D including kit information and preparation procedures.• Revised Additional Resources section to provide more clarity on the resources available.• Revised Prepare for Pooling to provide more clarity on the pooling information.• Included TWB pipetting technique information in steps.• Clarified language throughout document to provide consistency throughout Nextera guides.
Document # 10000000254 16 v06	March 2019	Corrected PTC program thermal cycler temperature.

Document	Date	Description of Change
Document # 10000000254 16 v05	March 2019	<ul style="list-style-type: none"> • Corrected loading concentration values. • Added information about separate workflow component requirements, DNA purity assessment, and about quantification and normalization of libraries. • Added Local Run Manager Guide to additional resources. • Added reagent overage information and PTC program settings to tagmentation step. • Revised tagmentation amplification to include AMP program information and correct multichannel pipette volume. • Revised workflow diagram to include RSB reagents. • Revised cleanup step to include separate steps for small PCR amplicons and standard DNA input and to correct safe stopping storage days. • Removed "Chapter 3 Sequencing." • Added supplementary IPB step to Analytical Fragment Analyzer. • Revised final loading concentrations in dilute libraries step. • Added information about reagent storage temperature to ensure performance. • Added new table with component and kit information and re-organized index kit information. • Added Fragment Analyzer and Bioanalyzer to consumables table, added Fragment Analyzer and Agilent Technologies to equipment table, and added CD and UD acronyms.
Document # 10000000254 16 v04	October 2018	Corrected average library size.

Document	Date	Description of Change
Document # 10000000254 16 v03	October 2018	<ul style="list-style-type: none"> • Updated Index Adapter terminology. • Updated to include IDT® for Illumina®-Nextera™DNA UD Indexes Set A (96 Indexes, 96 Samples). • Updated diluting to starting concentration information. • Added clarification in regards to ordering index adapters. • Added additional resource information for Unique Dual Indexes. • Added catalog number information for IDT® for Illumina®-Nextera™DNA UD Indexes Set A (96 Indexes, 96 Samples) and Axygen® 1.7 mL MaxyClear Snaplock Microcentrifuge Tubes. • Updated storage information for Lysis Reagent Kit. • Clarified PCR Amplicons information. • Clarified instructions when safe stopping is an option. • Moved recommended read lengths for each system to the support site. • Moved blood and lysis consumables to their own table. • Revised step-by-step instructions to be more succinct. • Reorganized the following content to improve continuity: <ul style="list-style-type: none"> • Rearranged DNA input recommendations. • Moved information on blood and saliva lysis preparation and procedures.
Document # 10000000254 16 v02	June 2018	Added information about PCR Amplicons.
Document # 10000000254 16 v01	April 2018	Replaced references to the <i>Nextera DNA Flex Pooling Guide (document # 1000000031471)</i> with the <i>Index Adapters Pooling Guide (document # 1000000041074)</i> . Pooling information is consolidated into the <i>Index Adapters Pooling Guide</i> .

Document	Date	Description of Change
Document # 10000000254 16 v00	October 2017	Initial release.

Technical Assistance

For technical assistance, contact Illumina Technical Support.

Website: www.illumina.com
 Email: techsupport@illumina.com

Illumina Technical Support Telephone Numbers

Region	Toll Free	International
Australia	+61 1800 775 688	
Austria	+43 800 006249	+43 19286540
Belgium	+32 800 77 160	+32 3 400 29 73
Canada	+1 800 809 4566	
China		+86 400 066 5835
Denmark	+45 80 82 0183	+45 89 87 11 56
Finland	+358 800 918 363	+358 9 7479 0110
France	+33 8 05 10 2193	+33 170 77 04 46
Germany	+49 800 101 4940	+49 89 3803 5677
Hong Kong, China	+852 800 960 230	
India	+91 8006500375	
Indonesia		0078036510048
Ireland	+353 1800 936608	+353 1 695 0506
Italy	+39 800 985513	+39 236003759
Japan	+81 0800 111 5011	

Region	Toll Free	International
Malaysia	+60 1800 80 6789	
Netherlands	+31 800 022 2493	+31 20 713 2960
New Zealand	+64 800 451 650	
Norway	+47 800 16 836	+47 21 93 96 93
Philippines	+63 180016510798	
Singapore	1 800 5792 745	
South Korea	+82 80 234 5300	
Spain	+34 800 300 143	+34 911 899 4 17
Sweden	+46 2 00883979	+46 8 50619671
Switzerland	+41 800 200 442	+41 56 580 00 00
Taiwan, China	+886 8 06651752	
Thailand	+66 1800 011 304	
United Kingdom	+44 800 012 6019	+44 20 7305 7197
United States	+1 800 809 4566	+1 858 202 4566
Vietnam	+84 1206 5263	

Safety data sheets (SDSs)—Available on the Illumina website at support.illumina.com/sds.html.

Product documentation—Available for download from support.illumina.com.



Illumina

5200 Illumina Way

San Diego, California 92122 U.S.A.

+1.800.809.ILMN (4566)

+1.858.202.4566 (outside North America)

techsupport@illumina.com

www.illumina.com

For Research Use Only. Not for use in diagnostic procedures.

© 2020 Illumina, Inc. All rights reserved.

illumina[®]